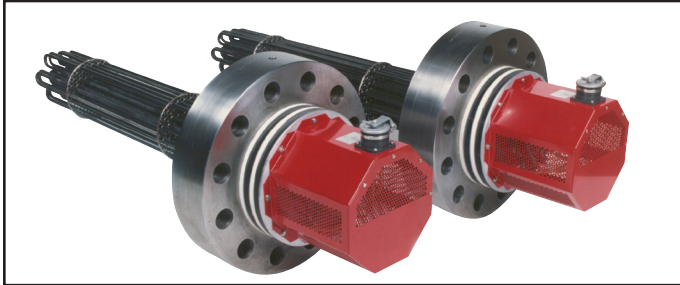




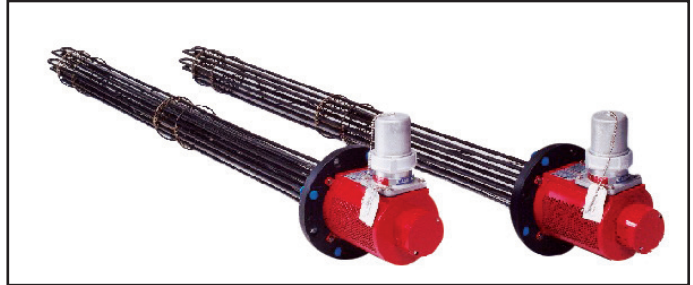
CATALOG PAGE IMMERSION HEATERS

1. PRESSURIZED HEATERS



Service	H2O and D2O
Voltage	Up to 660 VAC Maximum
Frequency	50 and 60 Hz
Power	Up to 400 kW
Design Pressure	Up to 3000 psig
Design Temperature	Up to 750°F
Heat Flux Density	Up to 120 W/in ²
Mechanical Design Code	ASME Code Section III, Class 1
Electrical Design Code	UL, CSA or IEC
Heater Diameter	Up to 14 inches Diameter
Heater Type	Tubular
Heater Connection Type	Flanged or Welded
Element Materials	304 SS, 316 SS, 321 SS, Incoloy 800
Electrical Area Classification	Hazardous Ex eb IIC T1...T6 Gb

2. IMMERSION HEATERS



Service	Liquid, Mixed Phase
Voltage	Up to 660 VAC Maximum
Frequency	50 and 60 Hz
Power	Up to 2000 kW
Design Pressure	Up to 3000 psig
Design Temperature	Up to 1200°F
Heat Flux Density	Up to 120 W/in ²
Mechanical Design Code	ASME Code Section III, Class 1, 2, 3 and ASME Code Section VIII, Division 1
Electrical Design Code	UL, CSA or IEC
Heater Diameter	Up to 50 inches Diameter
Heater Type	Tubular
Heater Connection Type	Flanged
Element Materials	CS, 304 SS, 316 SS, 321 SS, Incoloy 800, Others
Electrical Area Classification	Hazardous Ex eb IIC T1...T6 Gb

3. INCREASED SAFETY IMMERSION HEATERS

Service	Liquid, Mixed Phase
Voltage	Up to 690 VAC Maximum
Frequency	50 and 60 Hz
Power	Up to 4000 kW
Design Pressure	Up to 3000 psig (200 atm)
Design Temperature	Up to 1200°F (650°C)
Heat Flux Density	Up to 120 W/in ² (18.6 w/cm ³)
Mechanical Design Code	ASME Code Section VIII, Division 1 or PED
Electrical Design Code	IECEx or ATEX
Heater Diameter	Up to 50 inches (1400 mm) Diameter
Heater Type	Tubular
Heater Connection Type	Flanged
Element Materials	CS, 304 SS, 316 SS, 321 SS, Incoloy 800, Others
Electrical Area Classification	Hazardous Ex eb IIC T1...T6 Gb





CX Flange Heater

Increased Safety

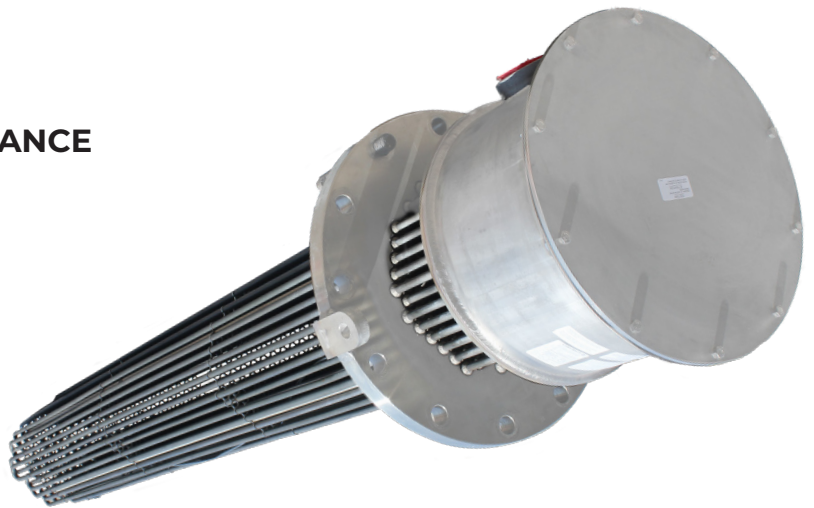
A New Enhancement to Thermon's Existing Immersion Heater Line-up

Safety and protection are the hallmarks of Thermon's Immersion Heaters. The "Increased Safety" protection method is a certified design used for equipment placed in explosive atmospheres under IECEx and ATEX design standards.

The Increased Safety immersion heaters can be custom designed to offer highly engineered solutions while meeting our customers' specific needs.

IMPROVED CERTIFICATION & COMPLIANCE

- › Certified to both IECEx & ATEX standards
- › Suitable for all gas groups (IIC)
- › Suitable for use in ambient temperatures from -60°C to +80°C
- › Power ratings up to 4MW, 690V, 3Ø, 50 or 60Hz



UPGRADED DESIGNS

- › Heater designs for large power ratings up to 4MW
- › Two different enclosure designs - round or square/rectangular (panel box type)
- › Temperature sensors to limit surface temperatures on flange and terminal box enclosures
- › Stilted or Non-Stilted Terminal Box designs

EASE OF USE

Adaptability and Flexibility:

- › Customization to allow flexibility for heater and enclosure designs to suit new and MRO
- › Square / Rectangular box has flexibility to be rotated to allow for easy installation and wiring.



Thermon aims to provide safe, reliable and mission critical industrial process heating solutions. The Increased Safety Immersion Heaters are built and tested to the customer's exact needs and specifications. With our engineering solutions we can design your next project with Thermon's high quality and safety standards.



Gain new possibilities with Thermon's "Increased Safety" Immersion Heaters



FOR ADDITIONAL INFORMATION:

www.Thermon.com



THS2002-1020

© Thermon • Information subject to change.

THERMON | 2721 PLYMOUTH DRIVE | OAKVILLE, ON L6H 5R5 | CANADA